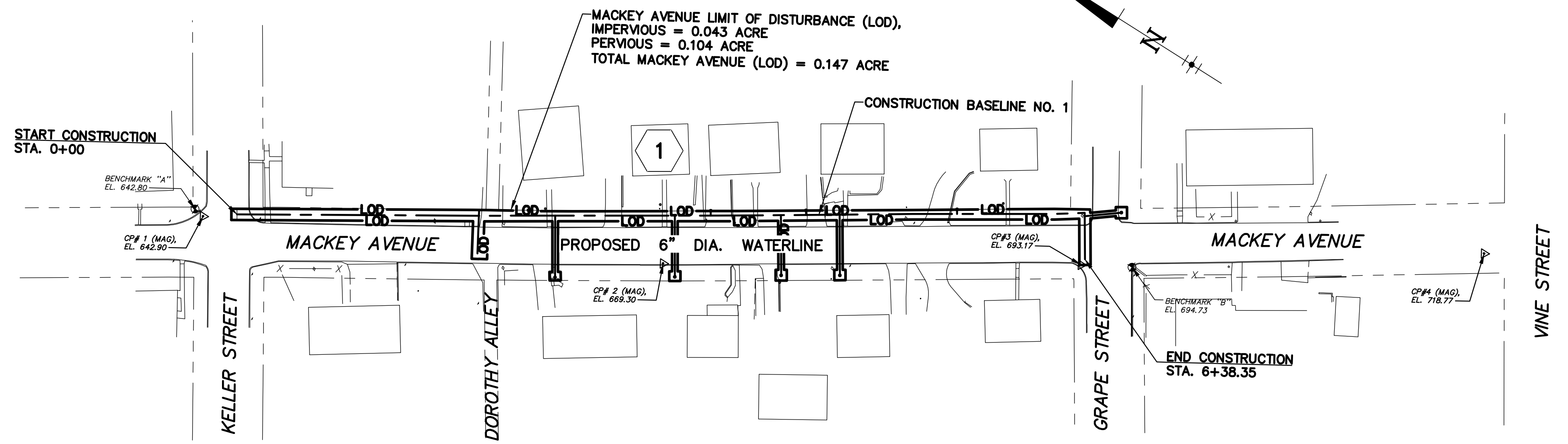


McELHATTAN AVE. 8" WATERLINE REPLACEMENT



MACKEY AVE. 6" WATERLINE REPLACEMENT

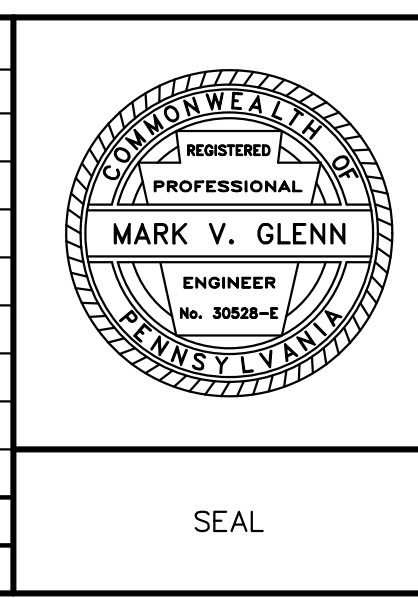
LEGEND

- RIVER/STREAM
- - - ROAD RIGHT OF WAY
- - - PROPERTY LINE
- PAVED ROAD
- - - PROPOSED WATERLINE
- LOD — PROPOSED LIMIT OF DISTURBANCE (LOD)
- CP SURVEY CONTROL POINT
- BM BENCHMARK
- 1 SHEET NUMBER

DRAWING INDEX

- CS-1 COVER SHEET
- CS-2 SHEET INDEX
- CS-3 ONE-CALL, NOTES, CONTROL POINTS AND BENCHMARKS
- 1 MACKEY AVENUE - PLAN AND PROFILE
- 2 McELHATTAN AVENUE - PLAN AND PROFILE
- 3 McELHATTAN AVENUE - PLAN AND PROFILE
- 4 McELHATTAN AVENUE - PLAN AND PROFILE
- D-1 DETAILS
- D-2 DETAILS
- D-3 DETAILS
- D-4 EROSION AND SEDIMENT CONTROL (ESC) DETAILS
- D-5 EROSION AND SEDIMENT CONTROL (ESC) DETAILS
- D-6 EROSION AND SEDIMENT CONTROL (ESC) NOTES
- D-7 EROSION AND SEDIMENT CONTROL (ESC) NOTES

NO.	DATE	DESCRIPTION



SHEET INDEX

CITY OF LOCK HAVEN

MACKEY AND McELHATTAN AVENUES WATERLINE REPLACEMENT

CASTANEA TOWNSHIP, CLINTON COUNTY, PENNSYLVANIA

DATE: 2/24/22	JOB: 21084	SCALE: AS SHOWN
FILE: 21084 CS-2	DRAWN BY: AJL	CHECKED BY: MVG

GD&F

GWIN DOBSON & FOREMAN ENGINEERS

3121 Fairway Drive
Altoona, PA 16602
814.943.5214
gdfengineers.com

SHEET NO:
CS-2